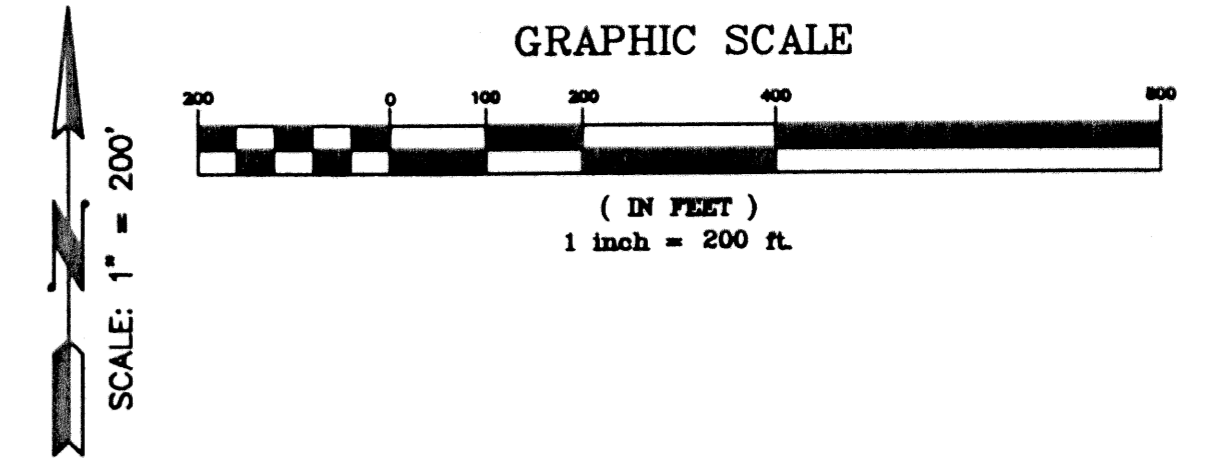


BOCA TECHNOLOGY CENTER PLAT 1

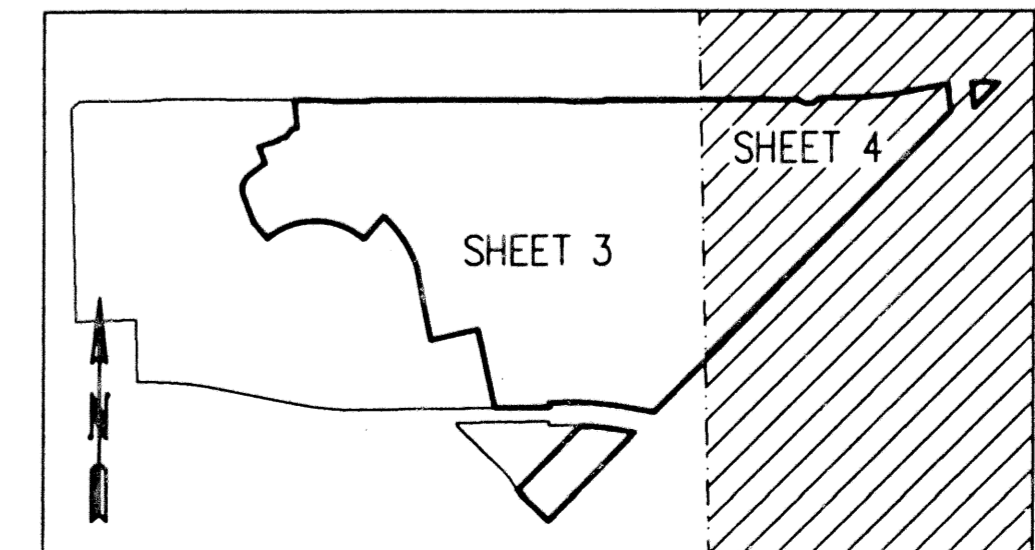
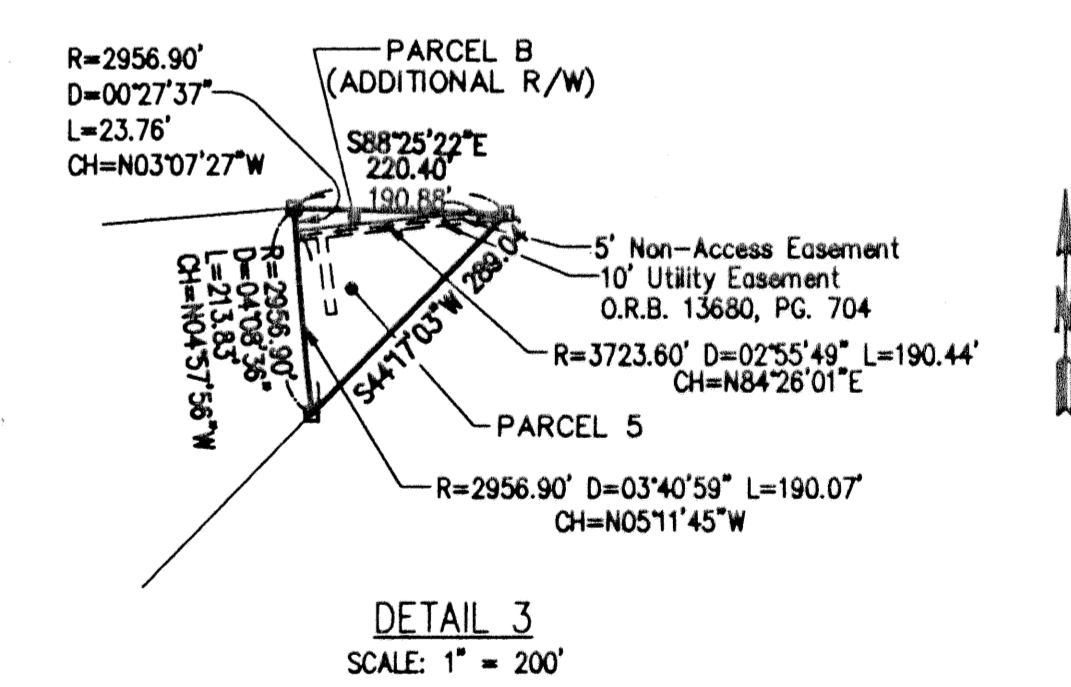
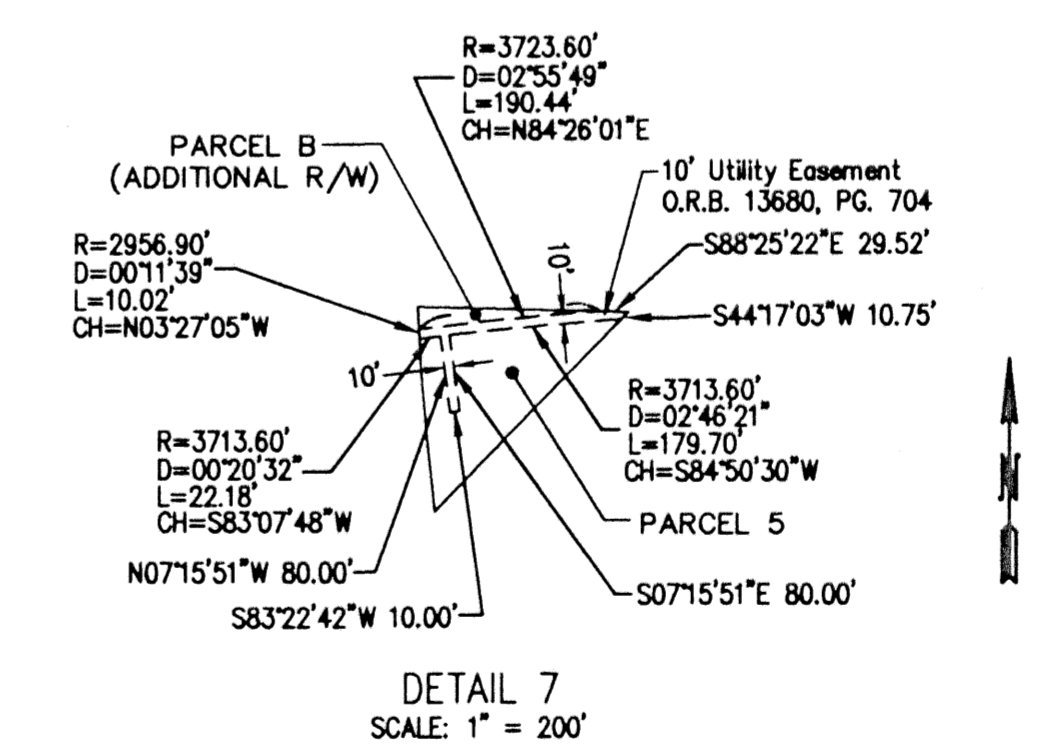
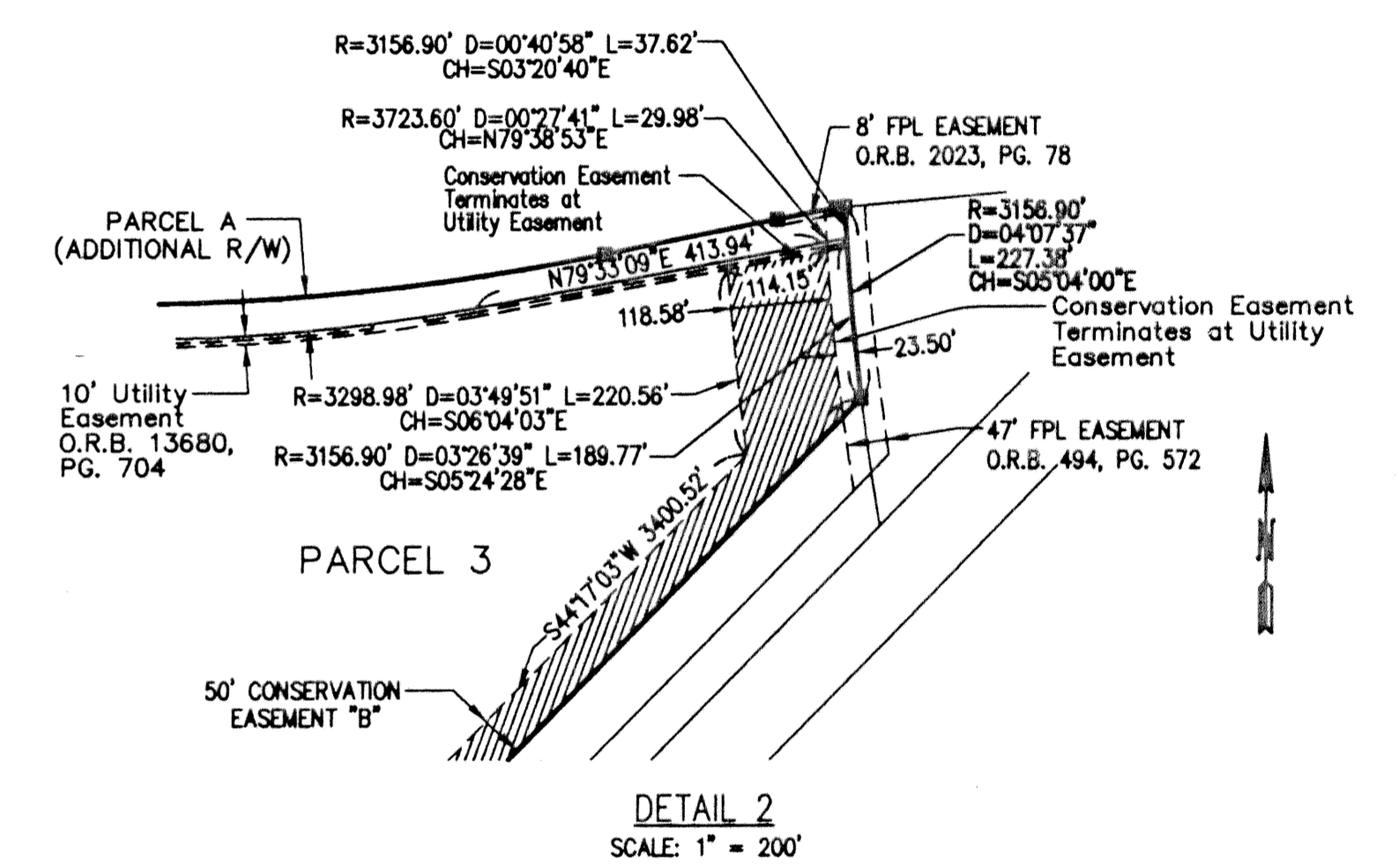
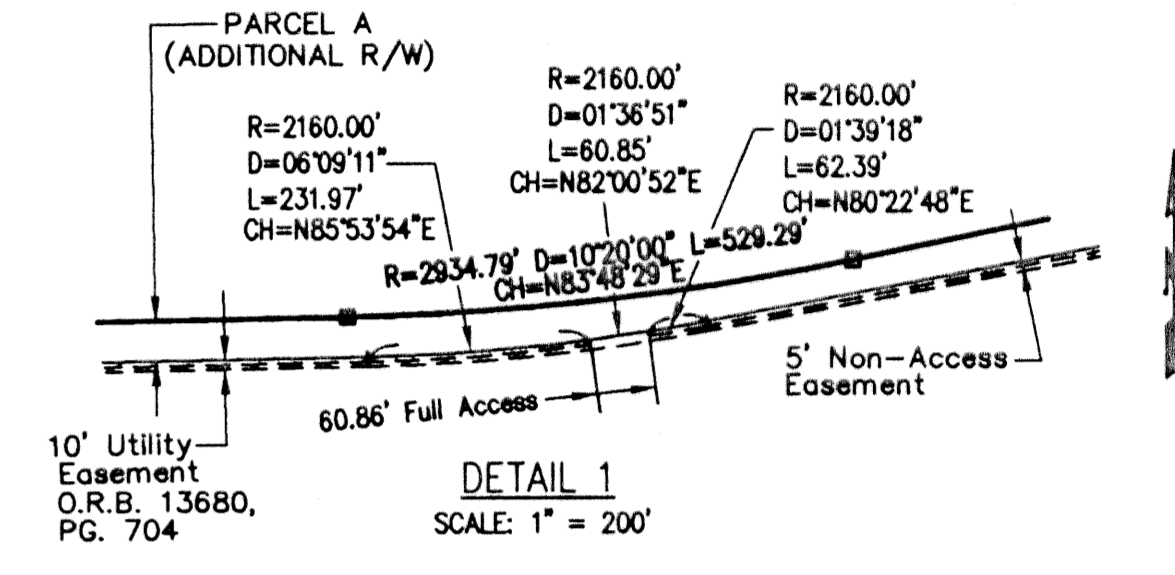
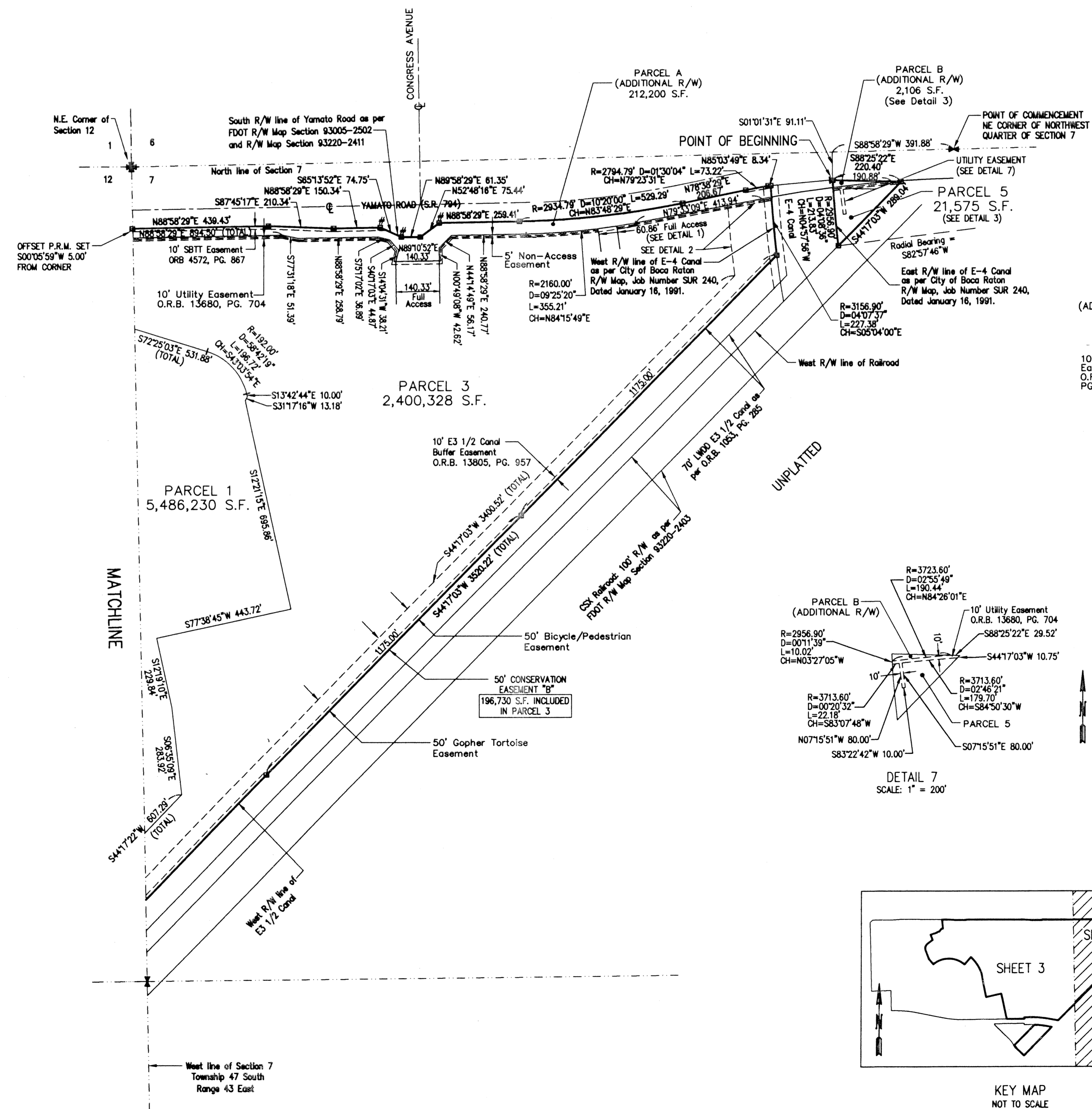
LYING IN SECTION 12, TOWNSHIP 47 SOUTH, RANGE 42 EAST
AND SECTION 7, TOWNSHIP 47 SOUTH, RANGE 43 EAST
CITY OF BOCA RATON, PALM BEACH COUNTY, FLORIDA
SHEET NO. 4 OF 4

MICHAEL G. PURMORT & ASSOCIATES, INC.
DEERFIELD BEACH, FLORIDA
MAY 2002



STATE OF FLORIDA
COUNTY OF PALM BEACH
This plat was filed for
record at _____ day
of _____ 2002, and duly
recorded in Plat Book No. _____
on Pages _____ thru _____
DOROTHY H. WILKEN
Clerk Circuit Court
By _____ D. C.

NOTE:
POUND SYMBOL INDICATES OFFSET P.R.M.
SET S0101'31"E 5.00' FROM CORNER



LEGEND

C	CENTERLINE
R/W	RIGHT-OF-WAY
S.R.	STATE ROAD
FDOT	FLORIDA DEPARTMENT OF TRANSPORTATION
LWDD	LAKE WORTH DRAINAGE DISTRICT
FPL	FLORIDA POWER & LIGHT
SBTT	SOUTHERN BELL TELEPHONE
O.R.B.	OFFICIAL RECORD BOOK
S.F.	SQUARE FEET
PG.	PAGE
D	CENTRAL ANGLE
R	RADIUS
L	ARC LENGTH
CH	CHORD BEARING
⊕	PERMANENT REFERENCE MONUMENT (P.R.M.)

COMPUTED JAD
DRAWN JAD
CHECKED
APPROVED
JOB NO. 20-152

THIS INSTRUMENT PREPARED BY:
MICHAEL G. PURMORT, PSM
FOR MICHAEL G. PURMORT & ASSOCIATES, INC.
(FLORIDA CERTIFICATE OF AUTHORIZATION NUMBER LB-2539)
843 SOUTHEAST 8TH AVENUE
DEERFIELD BEACH, FLORIDA 33441
954-421-9101

H:\2015\2000\Survey\PLAT 1\PLAT1-MAP.dwg Plotted: 7/10/2002 4:34 pm By: JADs Plot Scale: 1"=200.0 Xref Dwg's: Last Updated: 7/8/2002